

# Boating Mallorca

## Hi-Star 48 aft cabin "Kathryn"

A spacious and comfortable long term cruiser with excellent accommodation and very well maintained.. MCA coded for twelve people.



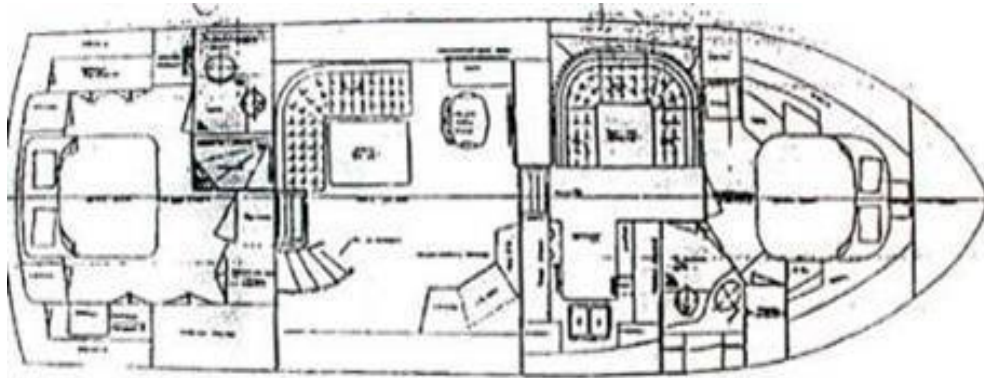
1988 - Hi Star 48 aft cabin  
Twin Caterpillar 3208 – 375 hp each

Price: ~~€ 99.000,-~~ VAT paid

**€ 85.000,- PRICE REDUCED**

Lying: Mallorca

# Boating Mallorca



## Layout

|                    |  |  |            |
|--------------------|--|--|------------|
| <b>DIMENSIONS:</b> | Hull length:   | 48'07"   | 14.82 M    |
|                    | LOA length:  | 47'80"   | 14.60 M    |
|                    | Beam:  | 14'6"  | 4.45 M     |
|                    | Draft  | 3'87"  | 1,18 M     |
|                    | Displacement   | 29,26 Tons   |            |
|                    | Type   | Semi displacement  |            |
|                    | <b>CAPACITIES:</b>   | Fuel:  | 264 galls  |
| Water:             |  | 127 galls  | 480 litres |
| Gas/Batteries:     |  | 2 x165 a.h. for domestic services<br>and port engine starting 2 x 165 a.h.<br>for starboard engine starting,<br>separate generator battery |            |
| <b>PERFORMANCE</b> |  | Max speed:   | 18 knots   |
|                    | Sea Cruising speed:  | 14 knots   |            |
| <b>ENGINES</b>     | 2 x 375 HP Caterpillar 3208 turbocharged Diesels, Shaft, 6 Cylinder, transmission oil cooler, heat exchanger, engine oil cooler, watercooled exhaust manifolds, auxillary sea water pump, expansion tank, thermostats, Cathodic protection.                              |  |            |
| <b>EQUIPMENT:</b>  | Teak sidedecks Hydraulic gangway, Swimming ladder<br>Outboard engine brackets, Radar reflector, Tender, Liferaft, Electric windlass (new 2004)<br>Danforth anchor with 40m chain<br>Plough anchor, Hand held searchlight<br>Automatic fire extinguishers in engine room. |  |            |

# Boating Mallorca

**ACCOMODATION:** Spacious aft cabin with central queen-size berth, ample storage and en-suite facilities of WC, hand basin and separate shower compartment. Forward cabin with central queen-size berth, storage and en-suite facilities of WC, hand basin and shower. Saloon with corner seating and table, storage units and inner helm position with chart table. Galley and dinette area forward. Roomy aft deck with seating, wet bar and GRP sunroof. Access to flybridge with upper helm and seating

**GALLEY :** Siemens 2 burner electric hob, Combination microwave oven, 12/220v fridge with freezer, Sink and storage, Ice maker, Washer/ dryer

**NAVIGATION EQUIPMENT:** Compass at main helm and flybridge  
Speed and log, Echosounder, Simrad GPS and plotter (2001), Radar, Autopilot (1997), DSC VHF (new 2006)

**GENERAL:** Hand held searchlight  
Automatic fire extinguishers in engine room  
2 x electric/manual bilge pumps  
4 x life jackets  
Full navigation lights  
Covers for flybridge and aft deck  
Bimini cover  
Panasonic music system with radio and CD  
Satellite TV  
Hydraulic passerelle by Opacmarine (new 2004)  
Bombard dinghy  
Yamaha 4HP outboard  
Electric crane on aft deck roof  
Warps and fenders  
Boathook  
Selection of spares  
Assorted cutlery, crockery and utensils  
8-person liferaft  
Clock, barometer, hydrometer  
Washer/dryer

# Boating Mallorca



These particulars are believed to be correct but are not guaranteed and should be verified by the purchaser before any contract is entered into. Photographs may show items not included for sale within the specification. A prospective buyer is strongly advised at her/his own expense to employ a qualified Marine Surveyor to carry out a survey and/or have an engine trial which conducted by us should not imply any liability on our part.