

Boating Mallorca

Sunseeker Martinique 36

1992

An excellent Sunseeker sports day cruiser - Our exhilarating Sunseeker Martinique 36 with twin Volvo Penta Diesel 230hp KAD43's engines. Please see full spec for the detailed list.



Twin Volvo KAD 43 – 230 hp each
1992

Price: € 49.000,- TAX paid

Lying: Mallorca

Boating Mallorca
Avda. Sementer 40 • 07660 Cala d'Or – Mallorca
Tel: (34) 971 643 583 • Mobile : (34) 630 456 173
e-mail: wilco.email@gmail.com

Boating Mallorca

Draft:	1,09m
Hull Material:	FG
Displacement:	5.588KG
Fuel: Diesel	Engines: Volvo Penta
Number of Engines:	2
Engine Model:	KAD43
Boat Location:	Mallorca, Spain
Engines HP:	2 x 230

Dimensions

LOA: 11,50m Beam: 3,58m Displacement: 6.000KG
Draft: 1,09m

Engines

Twin Volvo KAD 43 Diesel, each 230Hp 6 cylinder fitted in 2006, 4 stroke , direct injected.

Fresh water cooled engines. Raw-water cooled stern drives. Volvo 290 series outdrives with power trims, and lift to 48 degrees. Patented cone clutch . Sacrificial anodes, underwater exhaust. Volvo controls, hydraulic hatch lift. Full engine instrumentation.

12V boat electrical system. 14V /50^a alternator charging 240V ring main. Hours: 250 hours, Cruising Speed: 24 Max Speed: 32

Tankage

Fuel: 1000 L, Water: 500L, Holding Tank: 50 L

Layout

4 Berth in Forward double cabin and double mid ship cabin, main saloon/dinette which converts to another berth. Basic galley with standing headroom & separate toilet compartment with shower facility.

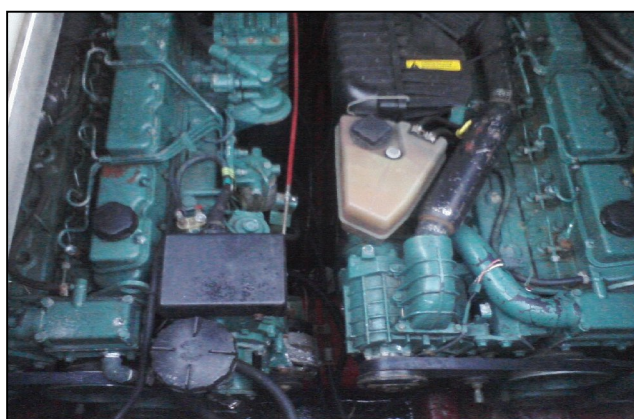
Extras

Renewed upholstery and cockpit carpet
White PVC Tonnneau cover
Bimini top with white canvas and stainless steel frame
Stainless steel windscreen frame
Electro hydraulic trim tabs
Compass

Boating Mallorca
Avda. Sementer 40 • 07660 Cala d'Or – Mallorca
Tel: (34) 971 643 583 • Mobile : (34) 630 456 173
e-mail: wilco.email@gmail.com

Boating Mallorca

Sunseeker standard echo sounder
Electric anchor winch
Cockpit teak decking
Bow thruster
GPS plotter
Autopilot
Generator



These particulars are believed to be correct but are not guaranteed and should be verified by the purchaser before any contract is entered into. Photographs may show items not included for sale within the specification. A prospective buyer is strongly advised at her/his own expense to employ a qualified Marine Surveyor to carry out a survey and/or have an engine trial which conducted by us should not imply any liability on our part.